

KAIPLUS & KAIFENG Composite Teeth

Extra hard teeth made from MAC (Micro Armor Composite) combine functionality and aesthetics to meet your unique needs.

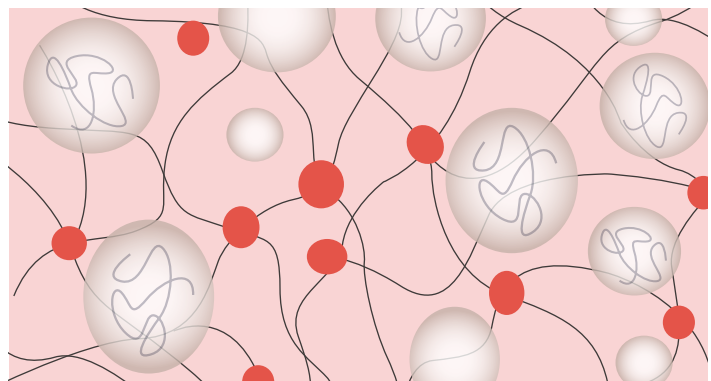
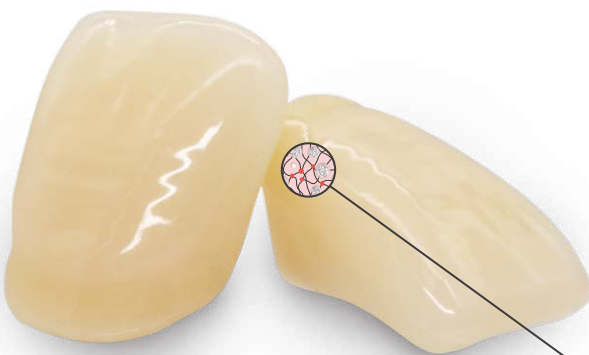
Trail Set in A2 shades available now, contact our sales for more information!



Durable Multilayer Structure

Innovative Technology for Extra Hard Teeth

KAIPLUS & KAIFENG Composite Teeth are designed for aesthetic, long-lasting and functional dentures.



Enamel Layer

Micro Armor Composite Resin

Filled with spherical filler with over 45% filling ratio, the MAC is applied to the enamel layer for aesthetics and practicality.

Dentin Core & Back Incisal

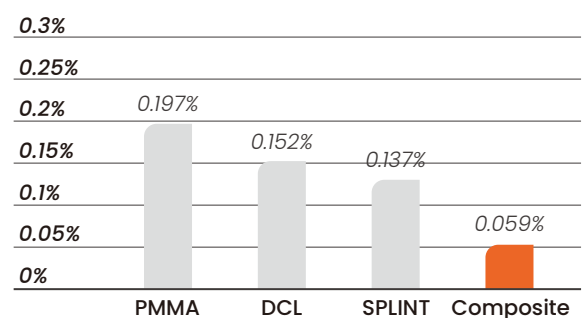
SPLINT Composite Resin

When applied to the dentin layer, our patented pre-polymerized SPLINT material would achieve higher structural strength and ensure chemical adhesion between teeth and denture base.

	PMMA	DCL	SPLINT	Composite* ^[1]
Hardness HV0.2	18	21	28	44
Compressive strength MPa	313	370	373	380
Flexural strength MPa	120	130	130	138
Modulus of elasticity MPa	2235	2346	2346	2580

Abrasion Resistance^[2]

Weight loss rate after 60,000 cycles with resin abrasives^[2]



[1] : Test Report, HUGE Dental, 2024

[2] : Third-party Test Report, 2024

You can expect from KAIPLUS & KAIFENG Composite Teeth:

- Vickers hardness over **44**, enhanced wear-resistance ✓
- Choose from a wide range of molds including semi-anatomical and non-anatomical posteriors to enhance individuality ✓
- Enjoy long-lasting wear resistance with reduced everyday wear and tear ✓
- Designed for aesthetic appeal with optimized translucency and brightness ✓



Composite Teeth ▶	KAIPLUS (EU/NA Version) 	KAIFENG 
--------------------------	---	---

Overview ▼

Anterior Layering	4 Layers	2 Layers
Material	Micro Armor Composite Resin (MAC)	
Shades	16 A-D; Bleach shades available at request	

Moulds ▼

Anterior	12 upper 6 lower	15 upper 10 lower
Posterior	28° : 8 upper/8 lower 0° : 2 upper/2 lower	28° : 4 upper/4 lower
Tooth moulds digitally available ▶	Yes	

**KAIPLUS EU/NA Version applies the well-loved MAIST morphology in Europe and America and has consistent performance with existing KAIPLUS*



Shandong Huge Dental Material Corporation

Add / No.68 Shanhai Road, Donggang District, Rizhao City, Shandong Province, 276800, P.R. China.

Tel / +86 (633) 2277268 marketing@hugedental.com www.hugedental.com

- [Facebook](#) Huge Dental
- [Instagram](#) Huge Dental
- [Youtube](#) Huge Dental